

ARP: 19° 05' 29.6" N  
072° 51' 57.5" E

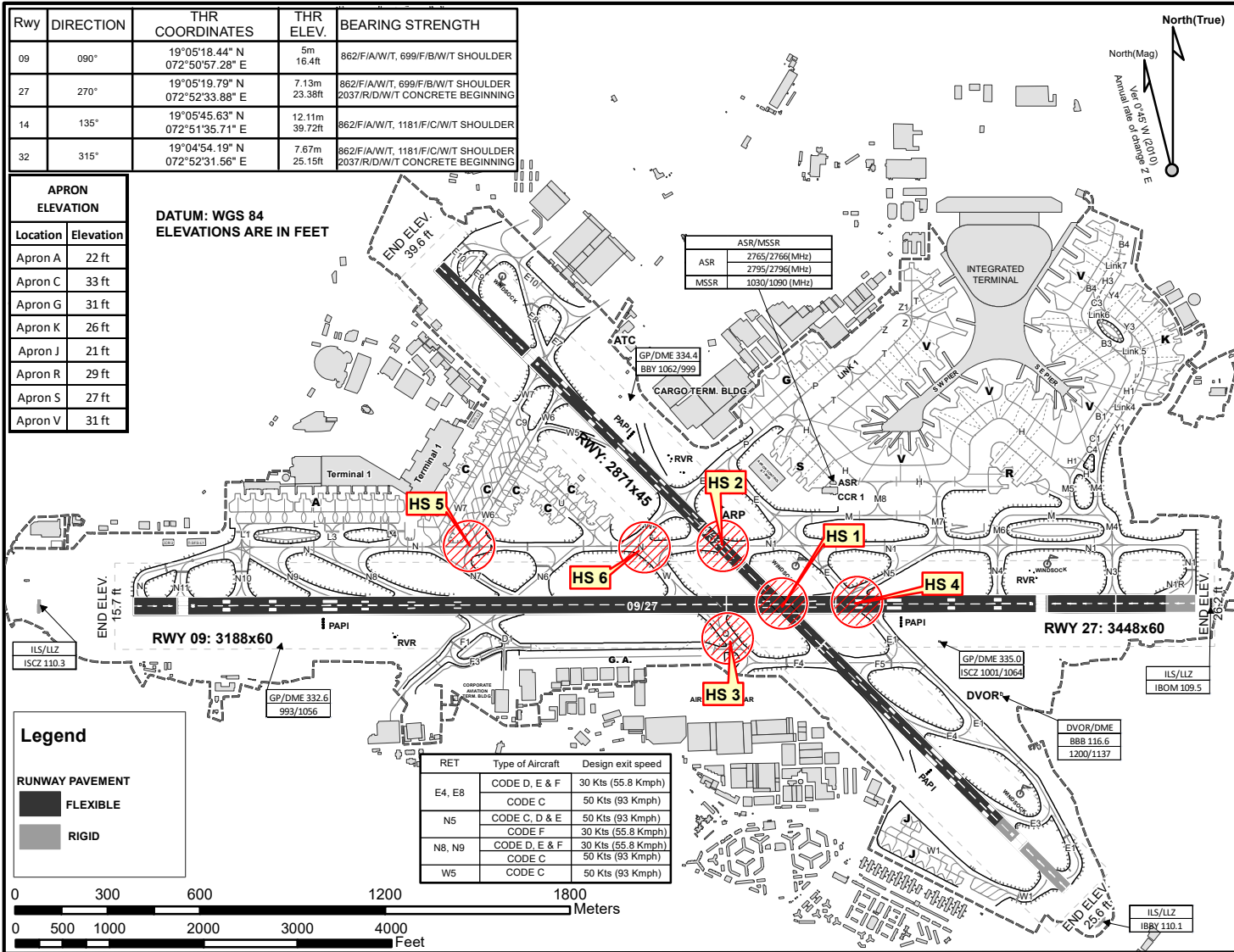
AD ELEV. 40

TWR 118.1  
GND 121.9

MUMBAI, INDIA

**AERODROME CHART - HOT SPOTS**

**CHHATRAPATI SHIVAJI MAHARAJ INTL AIRPORT**



Hotspot	Location	Additional Information
<b>HS 1</b>	Intersection of RWY 14/32 and RWY 09/27	Pilots taxiing on RWY to ensure heightened attention and shall hold short of RWY intersection unless specifically authorized by ATC to cross the RWY or taxi as directed. While taxiing on RWY 14 for RWY 27 Departure, pilots to exercise due diligence not to miss the left turn for TWY N1. If the left turn is missed, do not cross the runway hold short markings of RWY 27 on RWY 14.
<b>HS2</b>	Junction of TWY N and TWY N1 with RWY 14/32	Pilots taxiing on TWY N or TWY N1 to ensure heightened attention and shall hold short of RWY 14/32 unless specifically authorized by ATC to cross the RWY or taxi as directed.
<b>HS 3</b>	Intersection of TWY Q with RWY 27	Pilots holding at TWY Q for RWY 27 departure might have restricted view of RWY 27 approach. Aircraft therefore shall hold short of RWY unless specifically authorized by ATC to enter RWY or taxi as directed. No aircraft shall vacate via TWY Q after landing on RWY 27 unless specifically authorized by ATC.
<b>HS 4</b>	Junction of TWY E and TWY E1 with RWY 09/27	Pilots taxiing towards South-East direction on TWY E to use due diligence not to miss the left turn for TWY N1. If the left turn is missed, do not cross the runway holding markings short of RWY 09/27. Pilots holding at TWY E1 for RWY 27 departure might have restricted view of RWY 27 approach. Aircraft therefore shall hold short of RWY unless specifically authorized by ATC to enter RWY or taxi as directed. Pilots are cautioned against expectancy bias for lining up RWY 27 when holding on TWY E1 for departure.
<b>HS 5</b>	Junction of RET N7 and TWY N	Pilots taxiing towards East on TWY N and approaching junction of TWY N & RET N7 to lookout for aircraft vacating RWY 27 via RET N7.
<b>HS 6</b>	Junction of TWY N, TWY W4 and TWY W	Aircraft holding on TWY W/W4 will prohibit aircraft from taxiing on TWY N behind it. Aircraft holding on holding position of RWY 14/32 on TWY N will prohibit aircraft from taxiing on TWY W4 / W. Pilots to exercise caution.
Note	1. Pilots shall take explicit RWY entry / crossing authorization from ATC. 2. RWY guard lights, mandatory instruction signs & markings, enhanced taxiway centre line markings and runway-holding position markings are provided as required to assist in prevention of runway incursion.	

NOTE: AERONAUTICAL GROUND LIGHTS ARE NOT SHOWN ON THIS CHART

Coordinate System : WGS 1984 UTM Zone 43 N